

The Revolution of Team Working

Vergil

Linktech Inc @ 2024





OUTLINE

- 01 Monday Introduction
- 02 Linktech Introduction
- 03 Monday WM Introduction
- 04 Monday in action
- 05 Our Service

01

Monday Introduction



Hypergrowth, year over year

200+

industries

200+

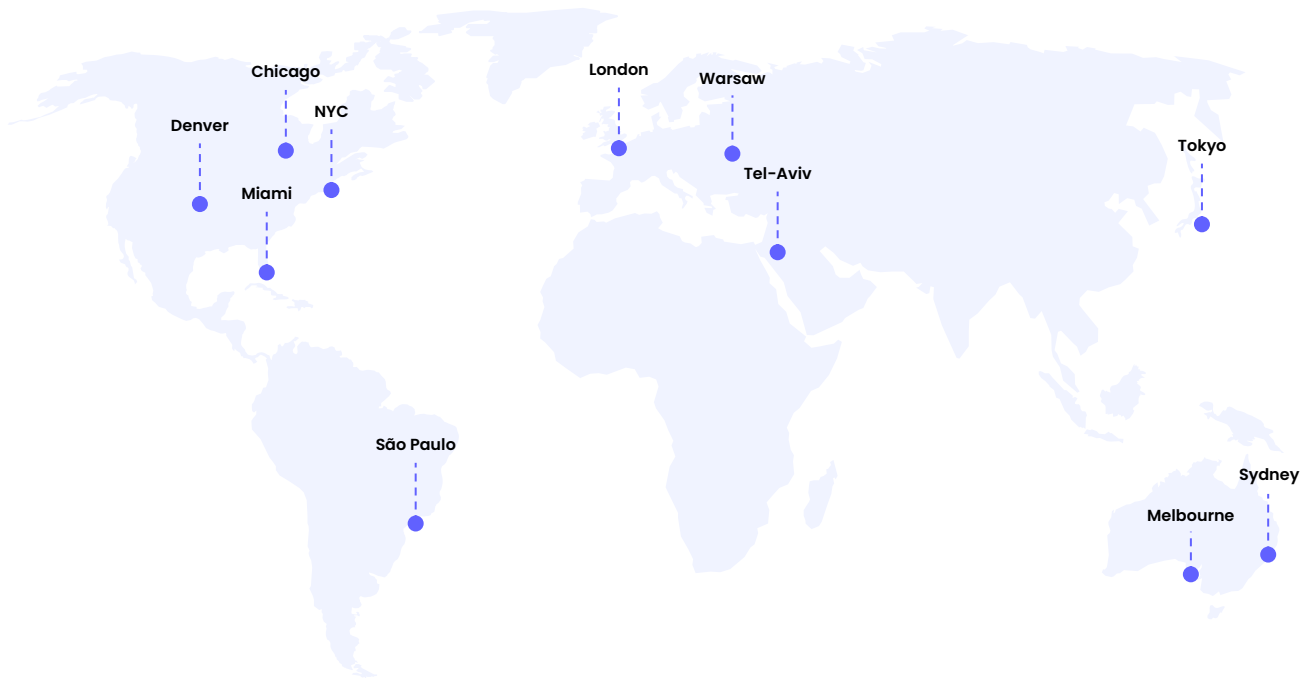
countries across
the world

70%

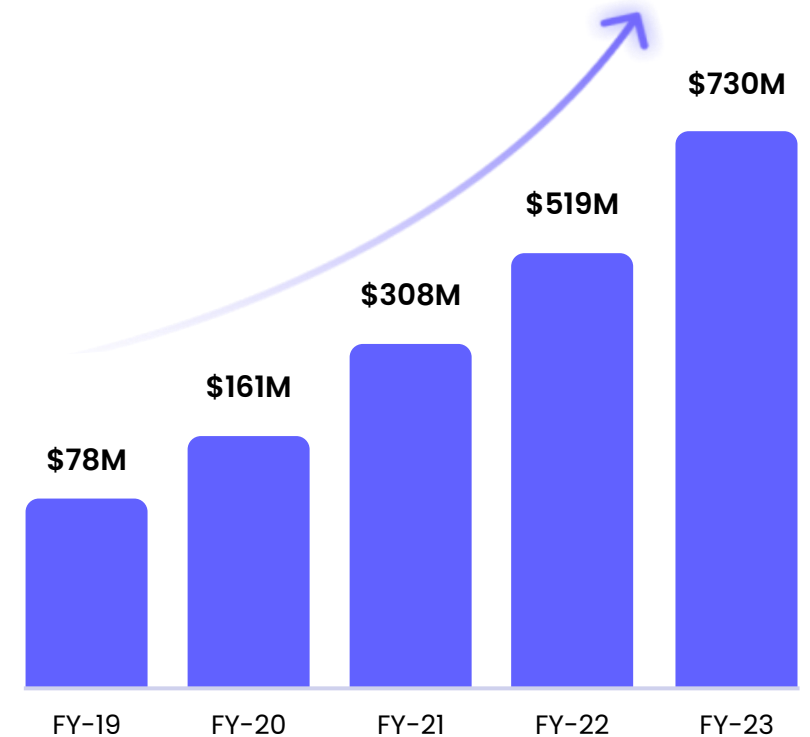
non-tech industries

56%

YoY increase in
enterprise customers



Consistent revenue growth
in any climate





61% of the Fortune 500 choose monday.com

225K

customers

200+

industries

200+

countries across
the world



Canva



nielsen

WIX

Outbrain



LIONSGATE

NHS



PAPA JOHNS



FLIGHT CENTRE



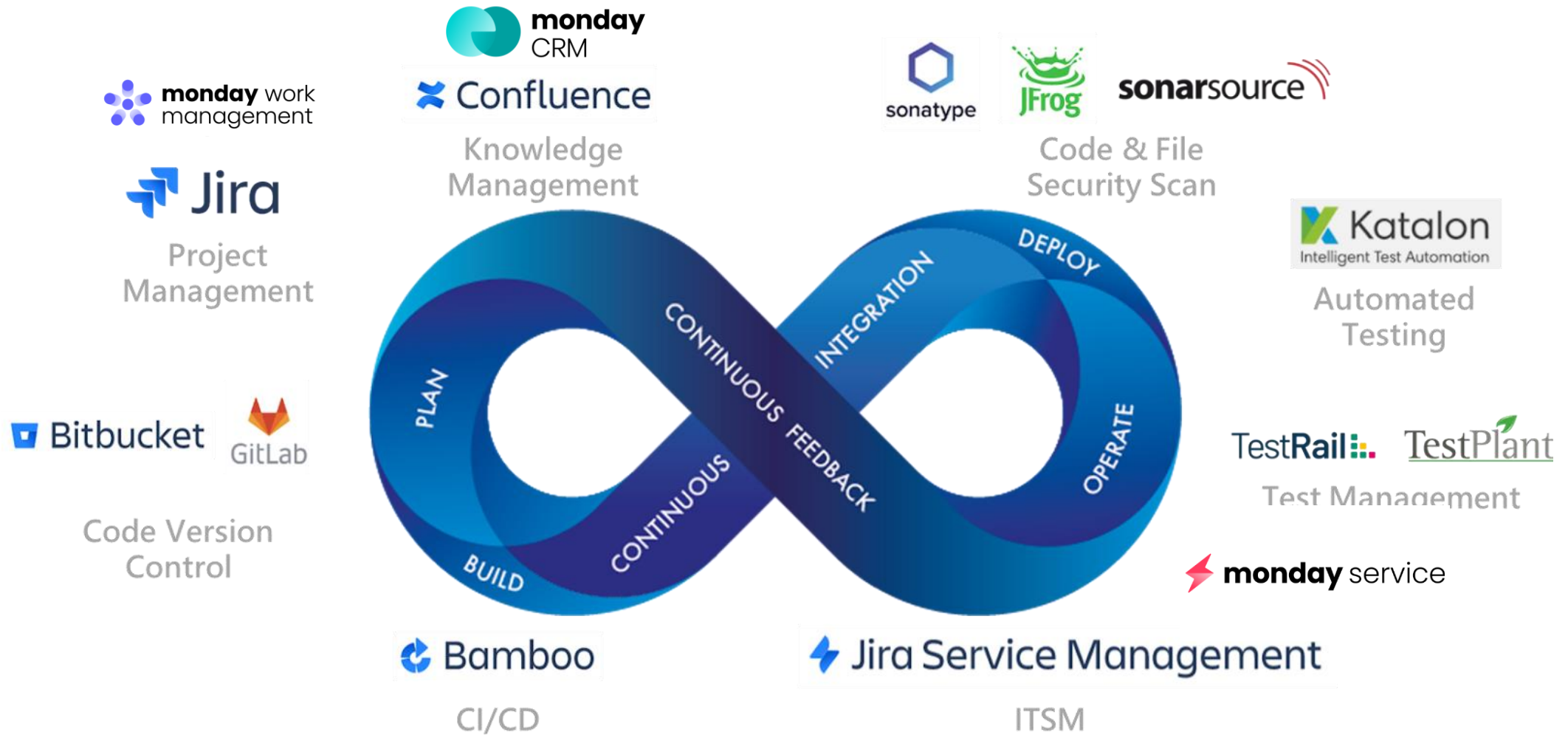
Business growth is built on operational excellence



02

Linktech Introduction

Make teams faster



Who We Serve



••• What we heard from our Customers

Current state

- Use Excel to manage projects.
- Got several systems (No central source of truth).
- Have no standardized workflow.
- Take times to generate reports
- No knowledge management.

Challenges

- Need to control versions, and hard to assign work items.
- Need to handle many systems and infos separately.
- Hard to control the quality of our projects.
- Wasting time.
- Slow down the progress of our teams.

••• Targeted business outcomes

Required Capabilities:

- A transparent work management platform with permissions to control user activities.
- System integration and replacement.
- Standardized workflow and should be easy to maintain.
- Realtime report.
- KM system fully support our work.



Positive business outcomes

- Fully control the progress of the project and enhance team alignment.
- Better way to work and cut down the expense on system maintenance.
- The quality of projects would be more stable .
- Team could adjust according to real datas and facts.
- Save time and progress.

03

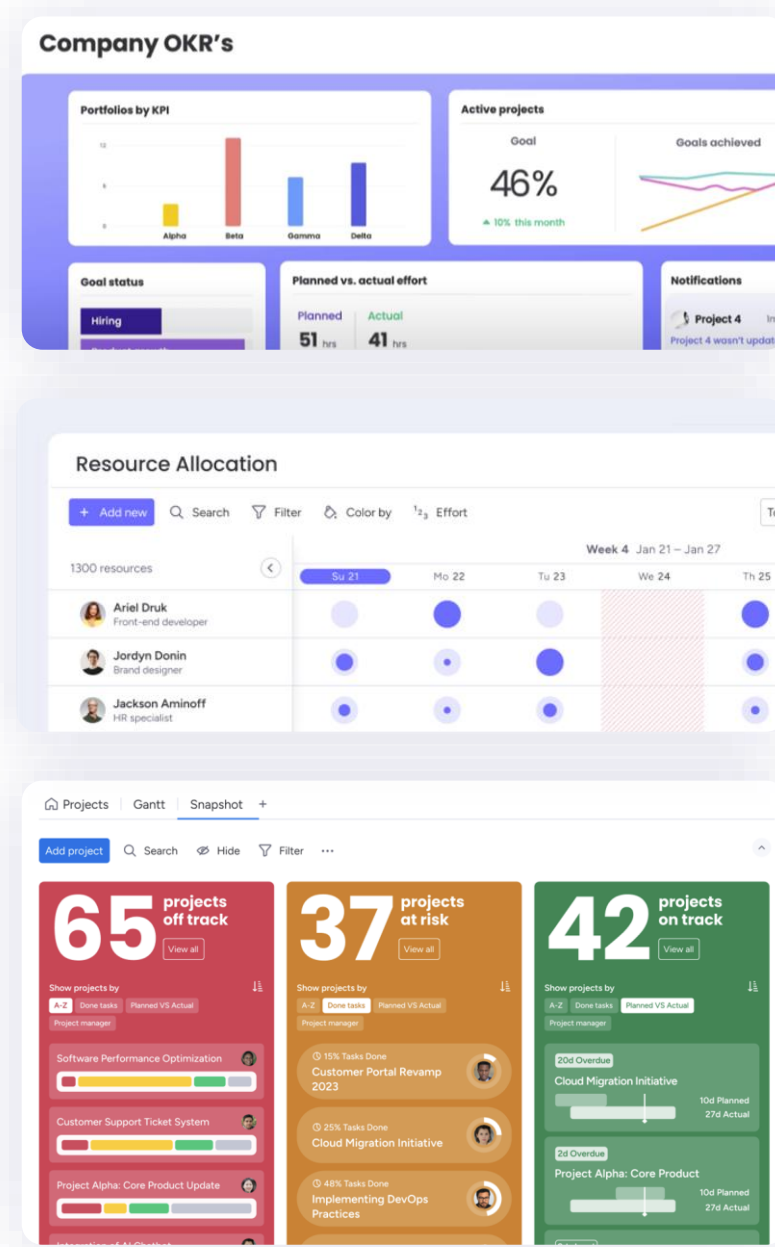
monday work management solution



monday work management

From strategy to delivery, power work at every level of the organization

- Goals and OKRs
- Project & portfolio management
- Client projects
- Business operations
- Resource management
- Task management



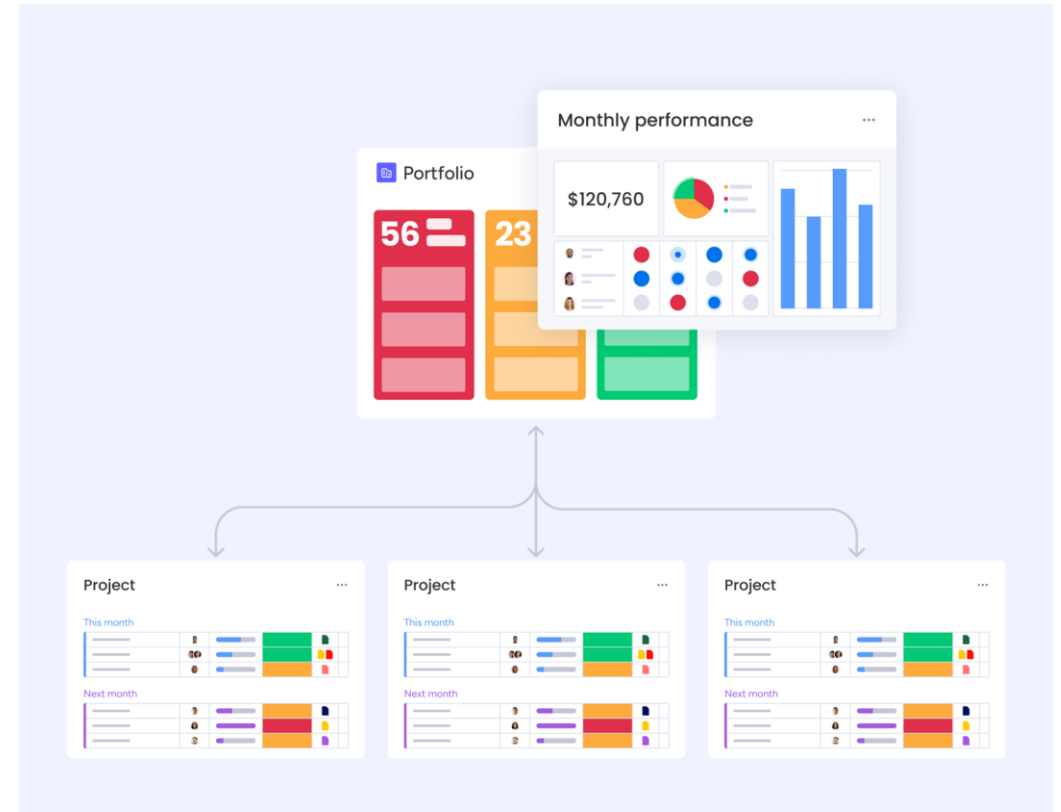
04

Monday in Action

What sets monday work management apart

Streamline end to end processes across the entire company

- **Customize workflows and reports.**
- **Empower teams to quickly optimize processes** – no technical skills required.
- **Standardize best practices** with templates and dashboards.



 Flexibility meets standardization



••• Launch, iterate, and scale **quickly**

- **Implement** and deploy swiftly
- **Rapid adoption** across business units
- **Iterate quickly** to improve and adapt
- **Launch additional workflows** across various departments, easily, at no additional cost



 High speed to value and rapid adoption



“

Everyone onboarded really, really fast.

We literally built this PPP loan process out over a weekend. monday.com is just so intuitive and easy to use. It's like an iPhone in a way in that you just know how and what you want to do next.



Anastasia Blaylock
Director of Treasury Management

 **Citizens Bank**

05

Implementation Plans

Professional Services

Your monday.com journey

From kickoff to deployment in up to 10 short weeks

10 hours per 100 users | Up to 6 live sessions | 60 days | Up to 5 workflows
*unlimited use cases



Kickoff

Getting to know each other and high-level planning

Week 1



Workflow discovery

Understanding and prioritizing your workflows

Week 1-2



Online sessions

Online consultation sessions and one mid-way sync

Week 1-4



Rollout

Rolling out monday.com to the team

Week 4-6



Preparation work*

Offline preparation work for sessions and your questions

Week 6-10



Ongoing support

Scaling with continued consultations and self-serve resources

Week 10+



LinkTech



monday.com

THANK YOU



www.linktech.com.tw